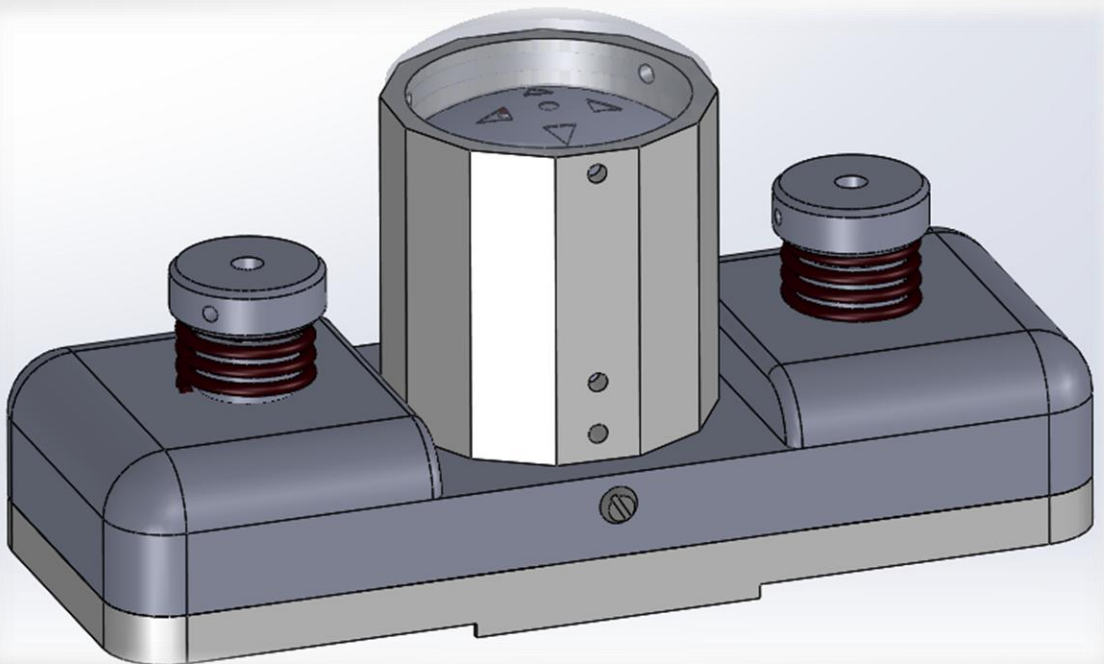


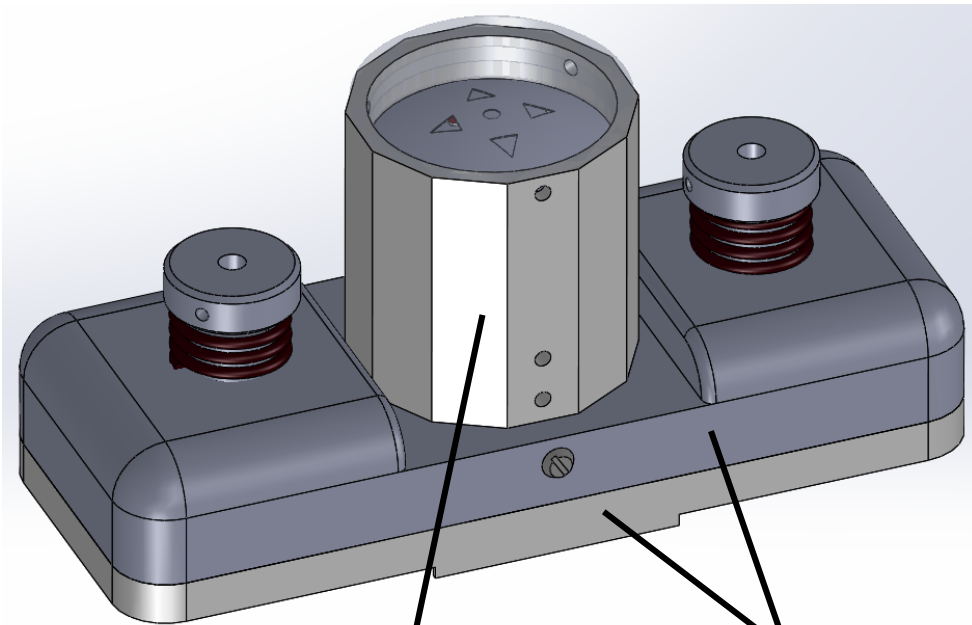
# Pilot Hole Searching system PHS



**KYOOKA**

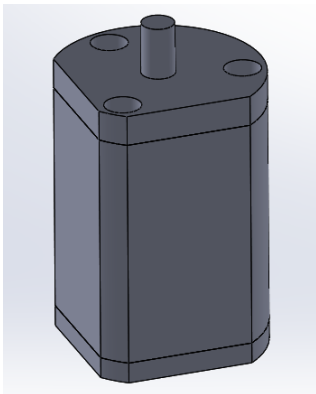
**Y.tech**

## Detail of PHS

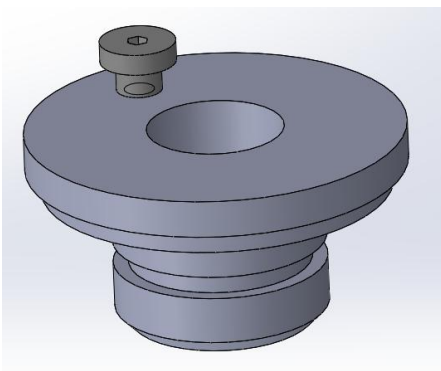


Receiver

Position Base



Transmitter

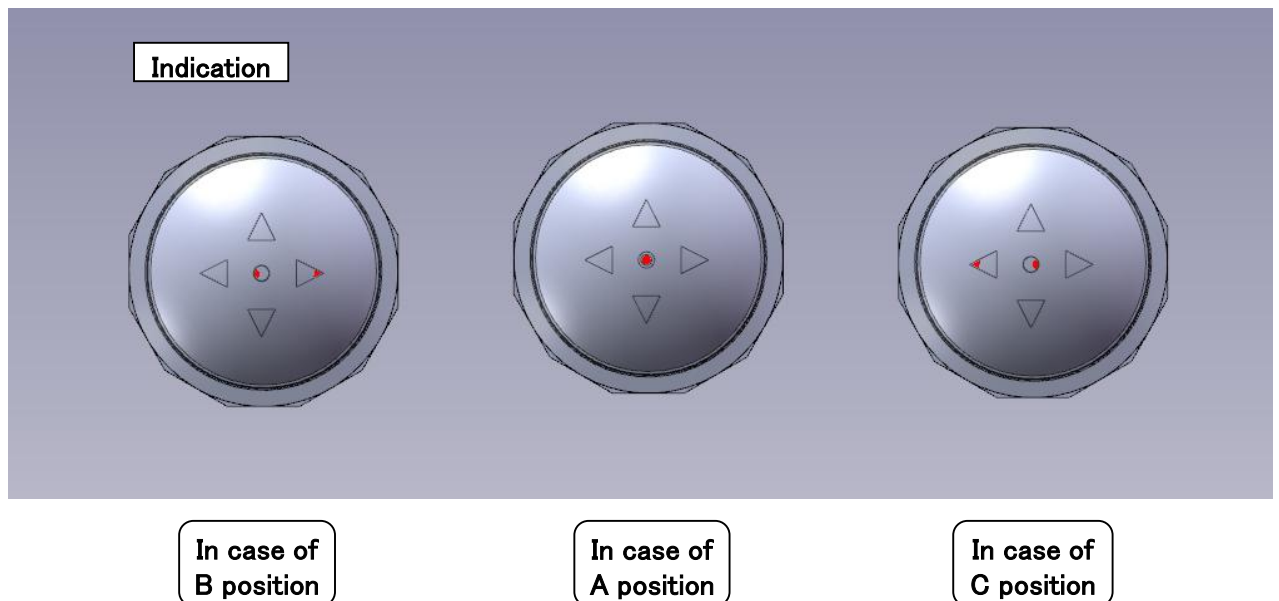
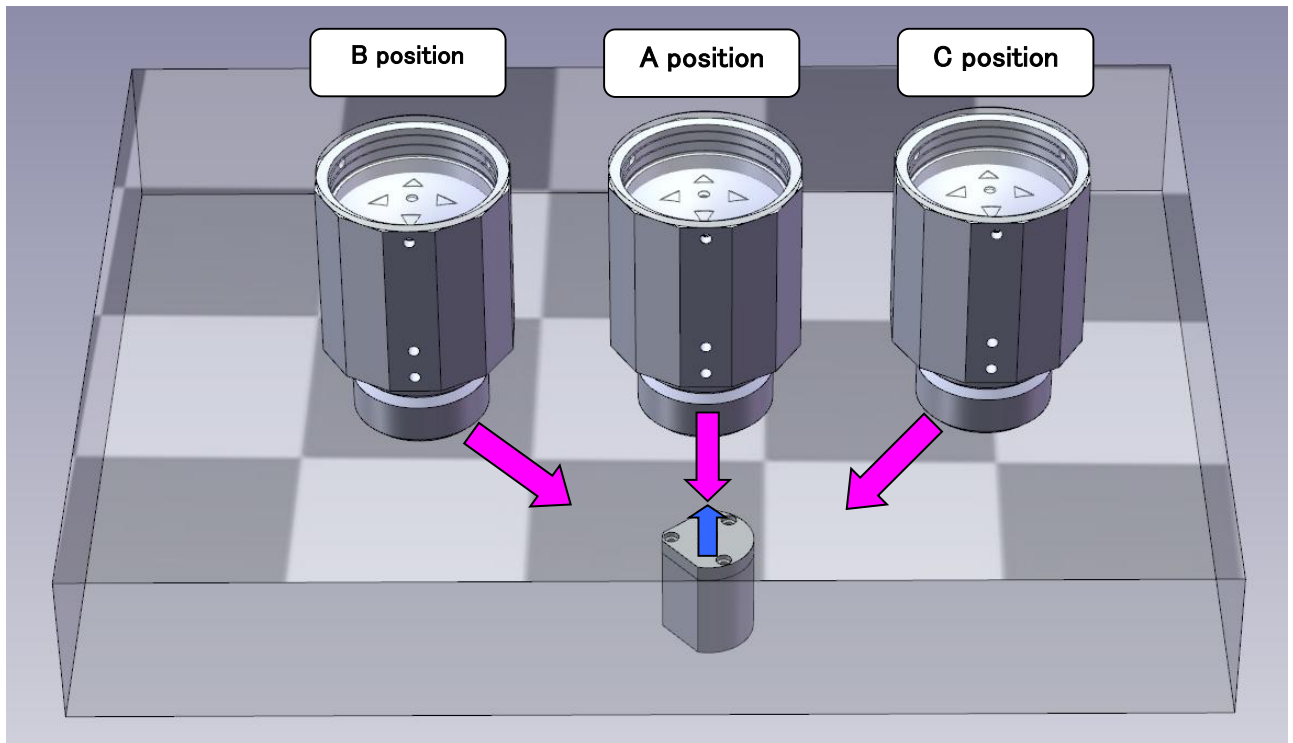


Drill Guide Attachment

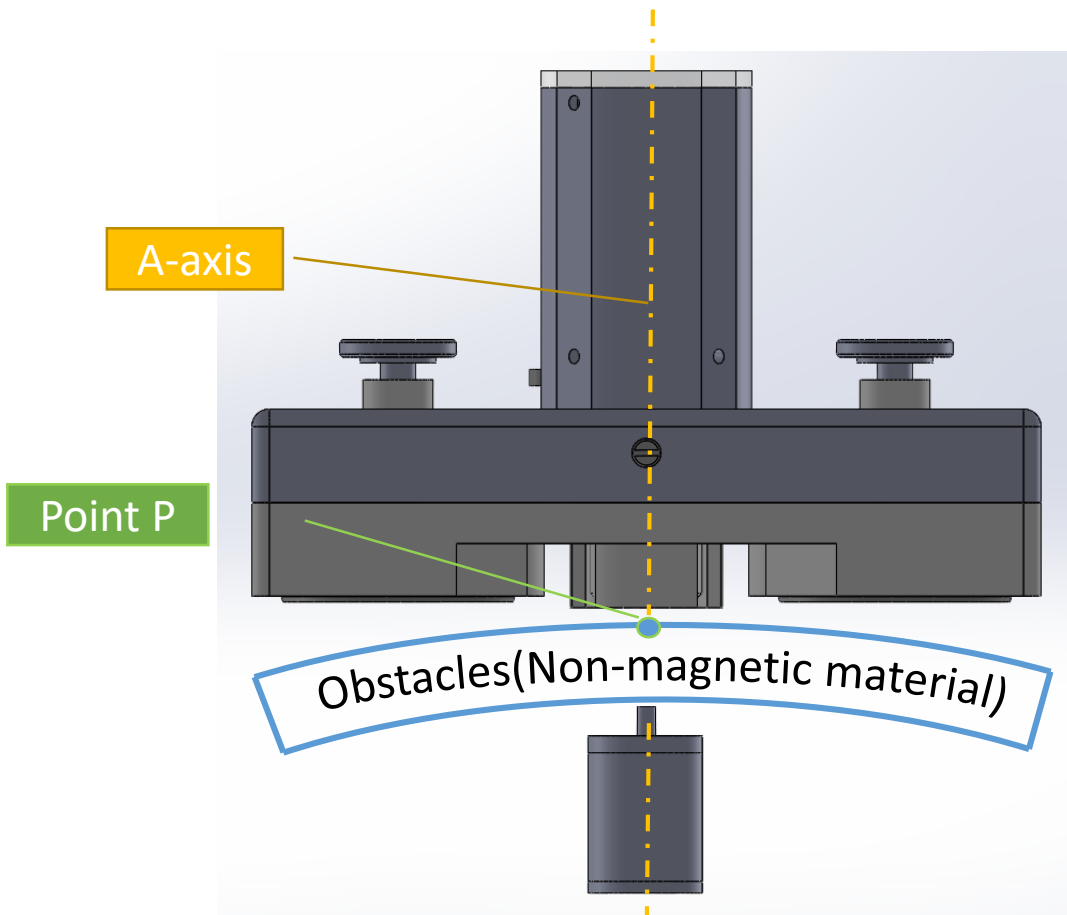
# Description of PHS

When the Receiver is moved based on the Transmitter, it detects the Transmitter's magnetism and locates its position.

※Indication of Receiver changes by a position of Transmitter.  
(see drawing below)



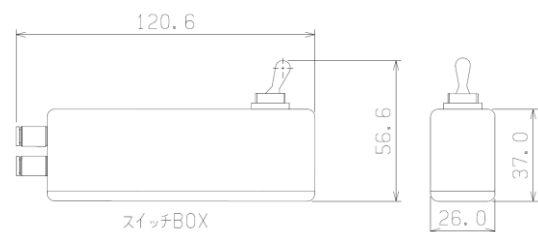
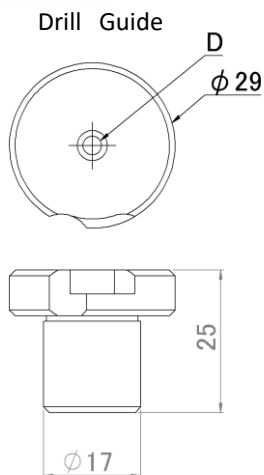
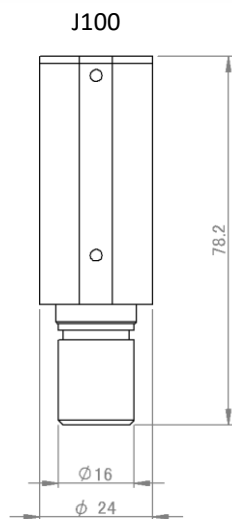
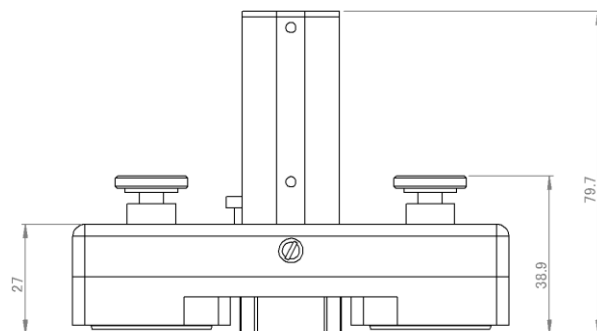
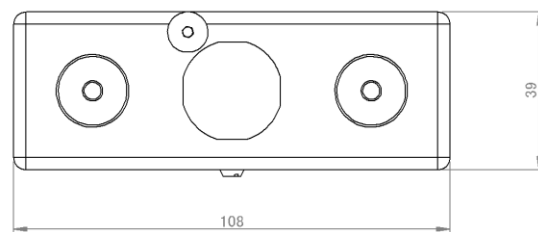
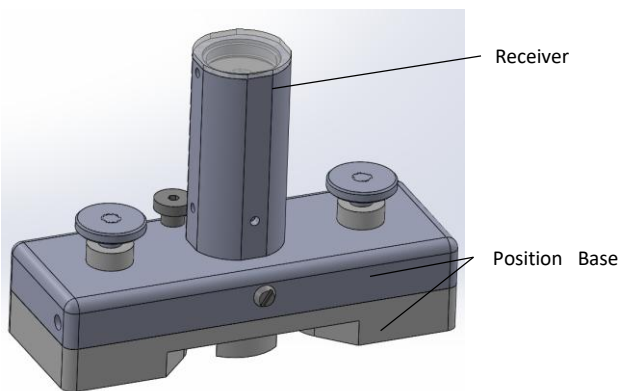
# Point of PHS



- The A-axis is a normal line of point P.
- In the case of J300, the detection ability is 2.5inch(60mm).
- Even if the detection ability is more than 2.5inch(60mm) by your requirement, it is possible.

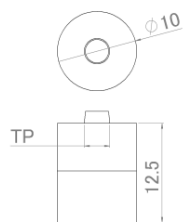
✂ The detection ability varies depending on the transmitter size.

# J100

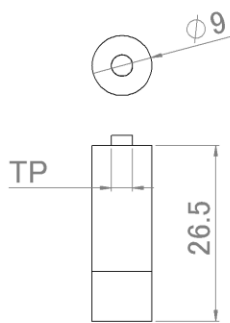


## Transmitter List

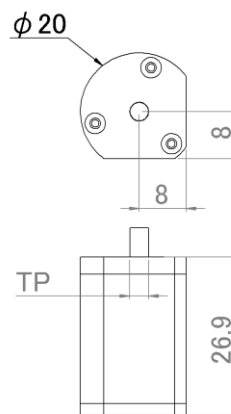
BS10-12.5-08-06-TP3.2-H00



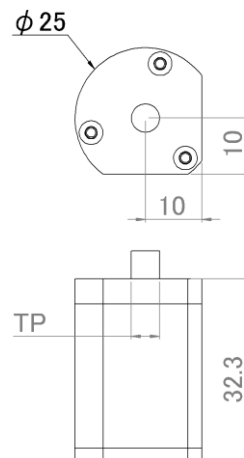
BS09-26.5-19.5-06-TP□-H00



BS20-26.9-13-12-TP□-H03



BS25-32.3-20-16-TP□-H03

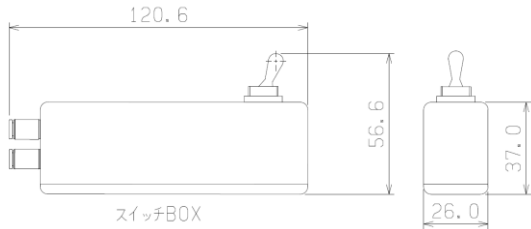
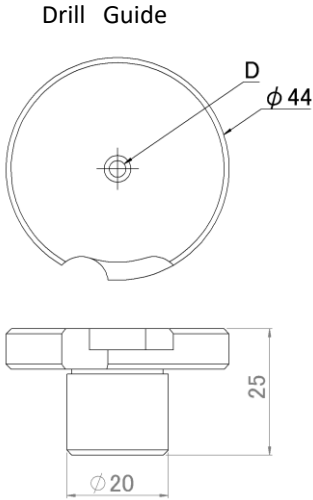
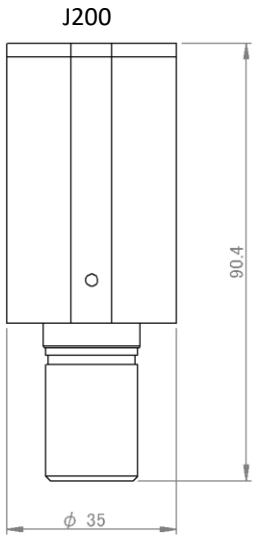
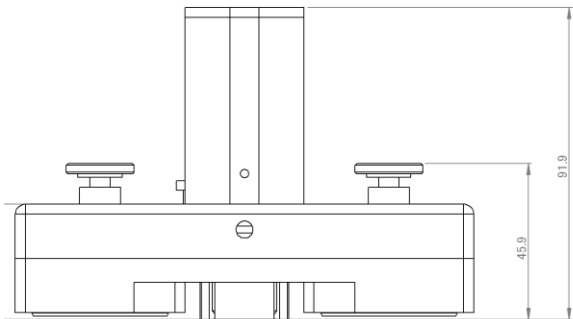
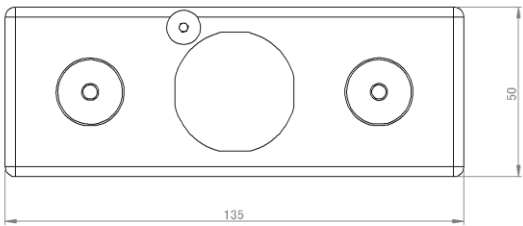
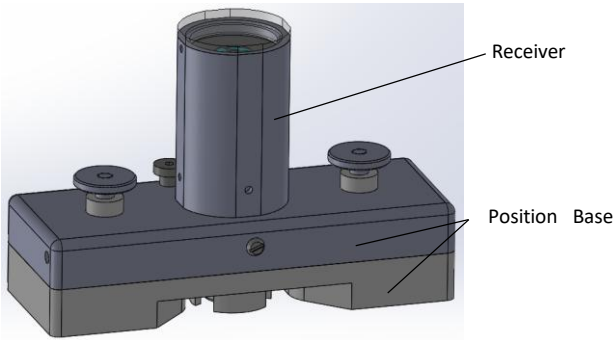


Ex) Order format

PHS-J100NM+BS09-26.5-19.5-06-TP3.2-H00+PA+D3.264+A-MPA2

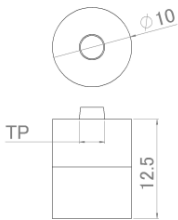
Type	Type of reaction to iron or not	Type of Back sensor	Position Base With or without?	Internal diameter of drill guide	Model number of air coupler
J100	NM Reaction to iron	BS10-12.5-08-06-TP3.2-H00	PA With Position Base	D3.264	A-MPA2
	M Non-reaction to iron	BS09-26.5-19.5-06-TP3.2-H00	PN Without Position Base	D5.055	A-CPP20-6B
		BS09-26.5-19.5-06-TP2.43-H00		DN Without drill guide	A-N Without air coupler
		BS20-26.9-13-12-TP3.2-H03			
		BS20-26.9-13-12-TP5.0-H03			
		BS25-32.3-20-16-TP3.2-H03			
		BS25-32.3-20-16-TP5.0-H03			

# J200

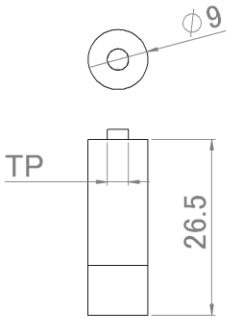


## Transmitter List

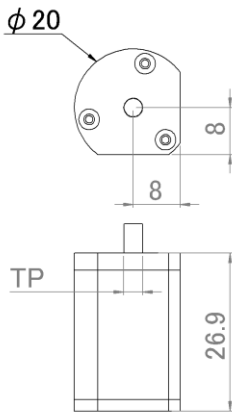
BS10-12.5-08-06-TP3.2-H00



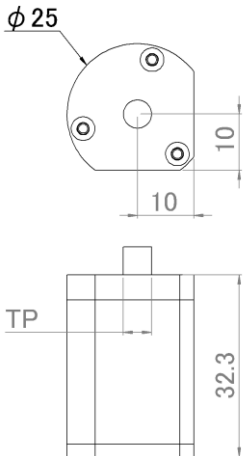
BS09-26.5-19.5-06-TP□ -H00



BS20-26.9-13-12-TP□-H03



BS25-32.3-20-16-TP□-H03

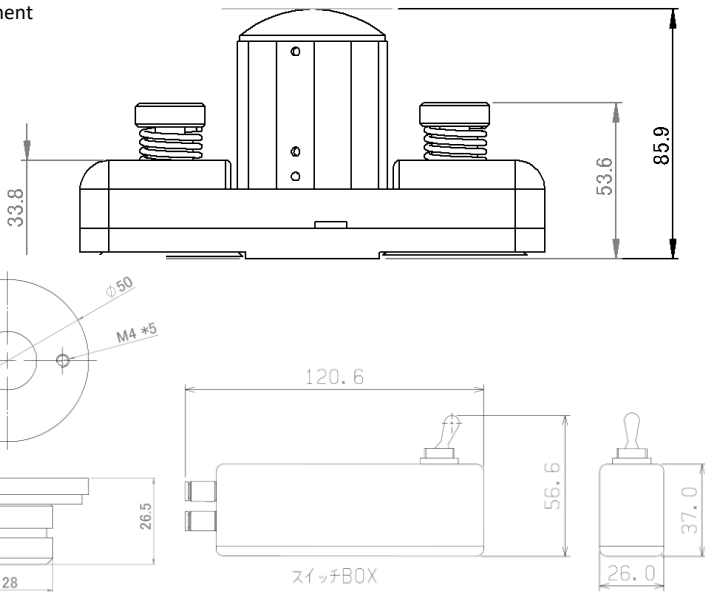
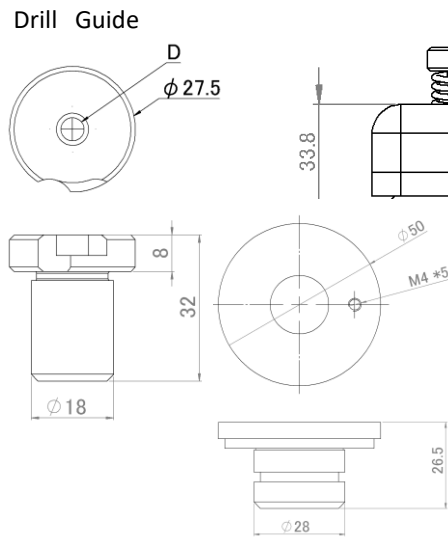
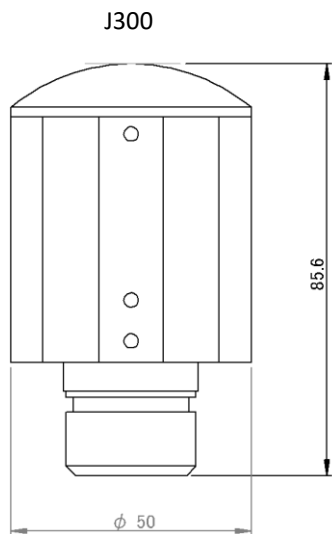
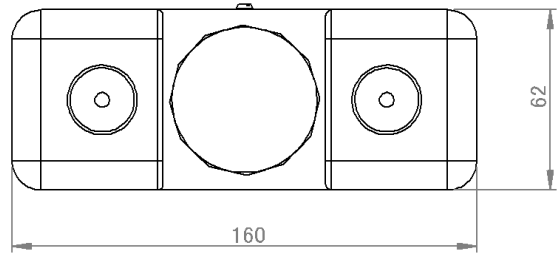
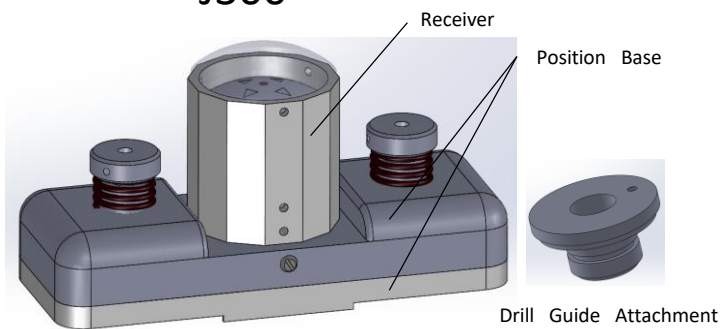


Ex) Order format

PHS-J100NM+BS09-26.5-19.5-06-TP3.2-H00+PA+D3.264+A-MPA2

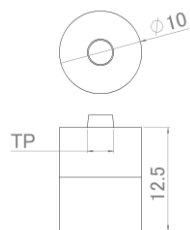
Type	Type of reaction to iron or not	Type of Back sensor	Position Base With or without?	Internal diameter of drill guide	Model number of air coupler
J200	NM Reaction to iron	BS10-12.5-08-06-TP3.2-H00	PA With Position Base	D3.264	A-MPA2
	M Non-reaction to iron	BS09-26.5-19.5-06-TP3.2-H00	PN Without Position Base	D5.055	A-CPP20-6B
		BS09-26.5-19.5-06-TP2.43-00		DN Without drill guide	A-N Without air coupler
		BS20-26.9-13-12-TP3.2-H03			
		BS20-26.9-13-12-TP5.0-H03			
		BS25-32.3-20-16-TP3.2-H03			
		BS25-32.3-20-16-TP5.0-H03			

# J300

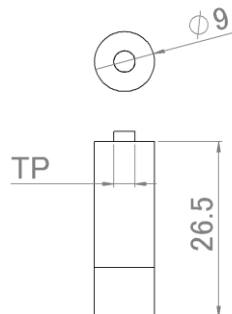


## Transmitter List

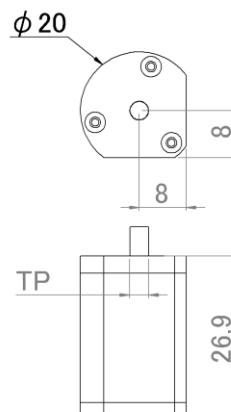
BS10-12.5-08-06-TP3.2-H00



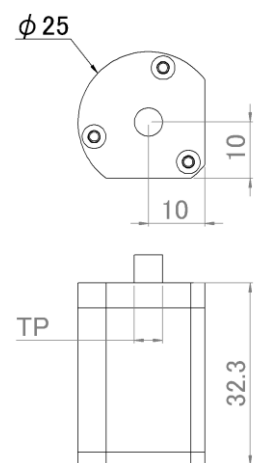
BS09-26.5-19.5-06-TP □-H00



BS20-26.9-13-12-TP□-H03



BS25-32.3-20-16-TP□-H03



Ex) Order format

PHS-J100NM+BS09-26.5-19.5-06-TP3.2-H00+PA+D3.264+A-MPA2

Type	Type of reaction to iron or not	Type of Back sensor	Position Base With or without?	Internal diameter of drill guide	Model number of air coupler
J300		BS10-12.5-08-06-TP3.2-H00	PA With Position Base	D3.264	A-MPA2
	NM Reaction to iron	BS09-26.5-19.5-06-TP3.2-H00		D5.055	A-CPP20-6B
	M Non-reaction to iron	BS09-26.5-19.5-06-TP2.43-00	PN Without Position Base	DN Without drill guide	A-N Without air coupler
		BS20-26.9-13-12-TP3.2-H03			
		BS20-26.9-13-12-TP5.0-H03			
		BS25-32.3-20-16-TP3.2-H03			
		BS25-32.3-20-16-TP5.0-H03			



**KYOOKA**

**Y.tech**

Design & Production  
KYOOKA Co., Ltd & Y.tech Co., Ltd

TOKYO HEAD OFFICE  
TOC Building, 10th Floor  
7-22-17 Nishi-Gotanda, Shinagawa-ku,  
Tokyo ,141-0031, Japan  
Tel (+81)-3-5724-6051  
Fax (+81)-3-5724-6047

YAMAGATA FACTORY  
4102-33, Izumita, Shinjo-shi, Yamagata,  
999-5103, Japan  
Tel (+81)-233-25-2151  
Fax (+81)-233-25-3575